



Cremation Systems, Inc.

Installation Manual

for

BLI-1500/150

Crematory Incinerator

Please Read Carefully Before Installing.

Any Questions, Please Call!

Failure to Install Properly may **VOID** Your Warranty.

NOTICE:

Specifications are subject to change without prior notice.

Please check with the factory on your specific order.

7205 - 114th Avenue North • Largo, Florida 33773
1-800-622-5411 • 727-541-4666 • Facsimile 727-547-0669
e-mail: sales@blcremationsystems.com • www.blcremationsystems.com

**GENERAL GUIDELINES
FOR INSTALLATION
OF
B & L CREMATION SYSTEMS, INC.
BLI-1500/150 ANIMAL INCINERATOR**

AMENDED 6/09

Your new B & L Systems Cremation / Incineration Equipment will arrive on a flat bed truck. After the tarp and hold down straps have been removed, please inspect your unit for any damage that might have occurred during shipment. If any damage is found, please contact the factory at once. **DO NOT unload or sign Bill of Lading.**

1. UNLOADING OF YOUR EQUIPMENT BY CRANE

See equipment specifications for size and weight.

Upon arrival of the crane, have the rigger locate the four (4) lifting lugs (see drawing #1), located on top of the unit, and install shackles or other such devices, to enable the crane to lift the unit from the flat bed truck. This unit can also be lifted by placing slings under the unit if preferred. **NOTE:** Spreader bars should be used to prevent pinching the top of the unit.

The unit should be raised from the truck bed and the truck should pull forward from the load. **Immediately lower to a close proximity to the ground**, in order to decrease the distance to ground, in case the shackles or rigging should fail.

The crane may now maneuver the unit as close to the building opening as feasibly possible. Tank dollies or equipment rollers should then be placed under the upright side supports to the unit. The crane can now lower the unit onto the rollers and the rigger may now disengage the crane. The unit should then be physically pushed into its final position.

If your state requires permits, they must be in hand prior to shipping the unit to your location. B & L Cremation Systems submits only for the environmental permit, any other permits that may be needed are your responsibility. Please check with your local authorities.

NOTE: Pipe or solid round stock can also be used.

Locate the four jack points (see drawing #1). Toe jacks or a similar apparatus may now be used to raise the unit, in order to remove the equipment rollers or tank dollies. The unit may now be lowered into its final position and the toe jacks can be removed. The unit should be as level as possible and any unevenness in the floor should be compensated with metal shims (see drawing #2). The rigger may now proceed in the bolting together of the stack sections (no gasket is required). The crane can now lift the stack into place and the rigger will bolt the flange on the bottom of the stack to the stack section on the top of the unit. The crane and flat bed truck may now depart. The unit comes with two tie downs on the back of the unit so it can be secured to concrete pad. Your contractor needs to drill lag bolts in slab to anchor unit to slab in final position. (½" dia. hole in tie downs for anchoring purposes)

2. UNLOADING OF YOUR EQUIPMENT BY FORK TRUCK

Lift incinerator to clear trailer bed after determining the balance point (**Note:** forks should be fully extended sideways to ensure stable lift). Once raised, the truck can drive forward from under the load. Lower unit onto rollers and push into building to its final position.
SEE CRANE INSTRUCTIONS FOR FINAL SETTING. (pg.1)

A qualified electrician may now bring the required power to the control panel (see specifications for voltage requirements page 5). Check with the factory if this is a remote installation. Your local utility company or plumber can hook the gas line to the unit and test for leaks (for pipe size information see drawings #4 & #5). **NOTE:** Test pressure on the gas system must not exceed 1 PSI as damage to the gas valves may result and void your warranty.

Upon completion of all of the above, contact the factory for a start-up date. Please allow for a minimum of two weeks notice.

NOTE: The above mentioned procedures are to be used only as a guide. Your own installers may wish to differ from these guidelines as they see fit.

SITE SPECIFICATIONS

The concrete pad should be at least 4" thick and the building and clearances should meet all local and federal codes.

The roof hole size should be approximately 36" diameter with no combustibles closer than 18" from the stack or 6" from stack with a stack thimble (see stack and roof detail #6 and roof thimble detail drawing #7). Please see NFPA 82 or applicable local codes.

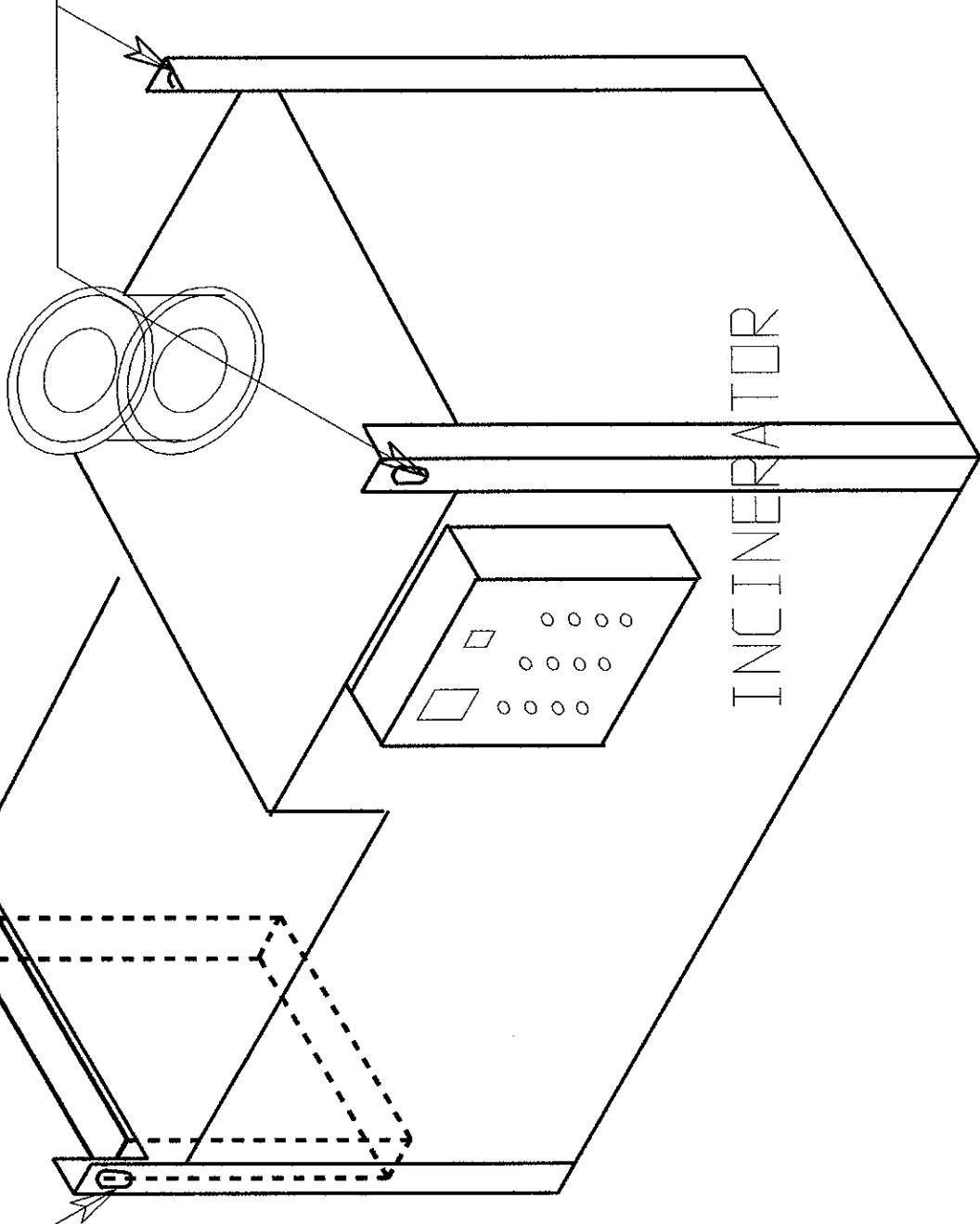
The roof flashing is supplied by the customer, unless otherwise arranged.

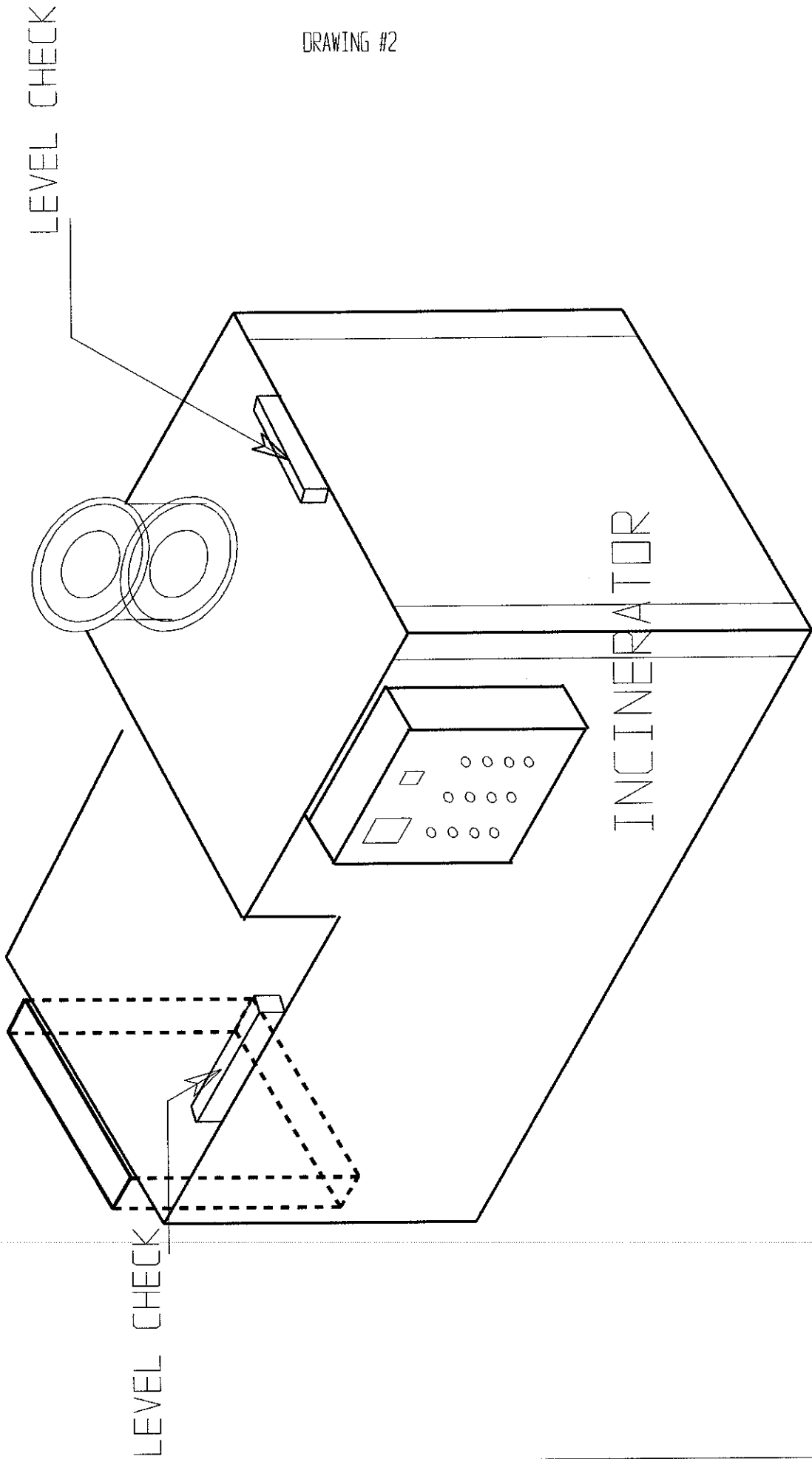
DRAWING #1

LIFTING LUGS

LIFTING LUGS

INCINERATOR





The incinerator will be shipped on a flat bed trailer complete with three 5' sections of lined stack. Additional stack may be included if required for your installation. The incinerator has been packaged prior to shipment.

DO NOT REMOVE PACKING UNTIL THE UNIT IS IN PLACE.

SHIPPING INFORMATION
BLI-1500/150

MEDIUM BATCH INCINERATOR

Height	84" (96" with afterburner)
Width	68" (82" with control panel)
Length	131" (139" with loading door)
Weight	23,000 lbs. approximate

STACK SECTIONS

Height	5' - 0" (each section)
Width	24" O.D.
Weight	600 lbs. (each section)

CLEARANCES

	<u>Minimum Clearance To A Combustible</u>	<u>Recommended Working Clearance</u>
Top of machine to ceiling:	Minimum 18"	Minimum 24"
Side of machine to wall:	Minimum 18"	Minimum 24"
Back of machine to wall:	Minimum 18"	Minimum 24"
Front of machine to wall:	Minimum 18"	Minimum 48"
Stack to roof:	Minimum 6" with thimble	Minimum 18" without thimble
Thermocouple location:	Minimum 6"	Minimum 24"

Floor must be noncombustible

**THE CONTROL PANEL ON
THIS UNIT IS (UL)
UNDERWRITERS LABORATORIES INC.
CLASSIFIED**

ELECTRICAL SPECIFICATION SHEET

The BLI-1500/150 incinerator requires the following electrical service:

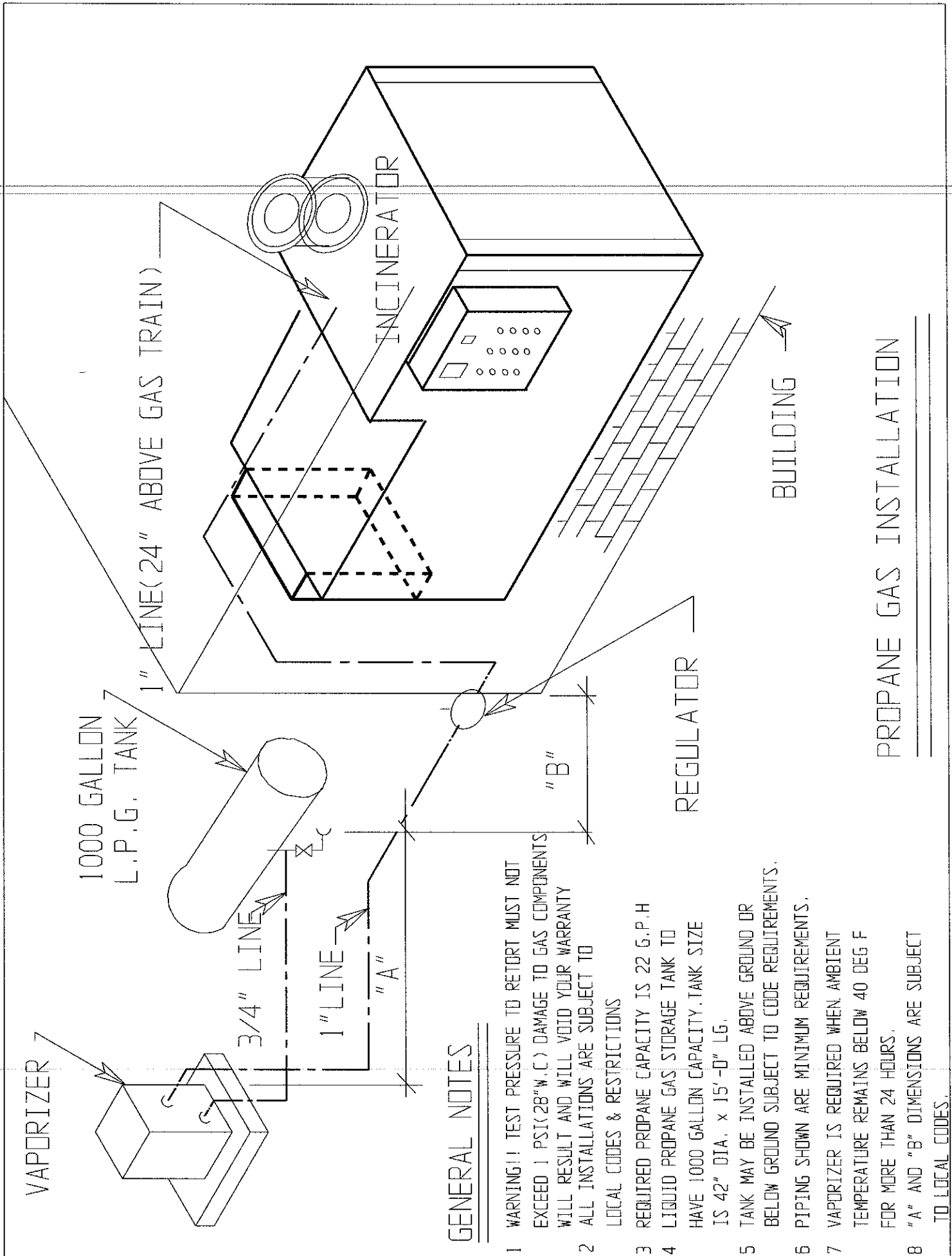
220 Volts Single Phase - 30 AMP Service

Remove packing from incinerator and open door to disconnect box on side of control cabinet and proceed as follows:

- (1) Connect 220V Hot to lug of fuseblock (30 AMP)
- (2) Connect neutral to neutral busbar (White)
- (3) Connect ground to ground lug (Green)
- (4) All wiring must be suitable for 30 AMP service as specified by N.E.C. Standards and/or local codes, whichever is applicable.

**DO NOT ATTEMPT TO OPERATE THE INCINERATOR
AFTER COMPLETING THE ELECTRICAL HOOKUP!**

NOTE: A PRIME GROUND MUST BE RUN TO UNIT.

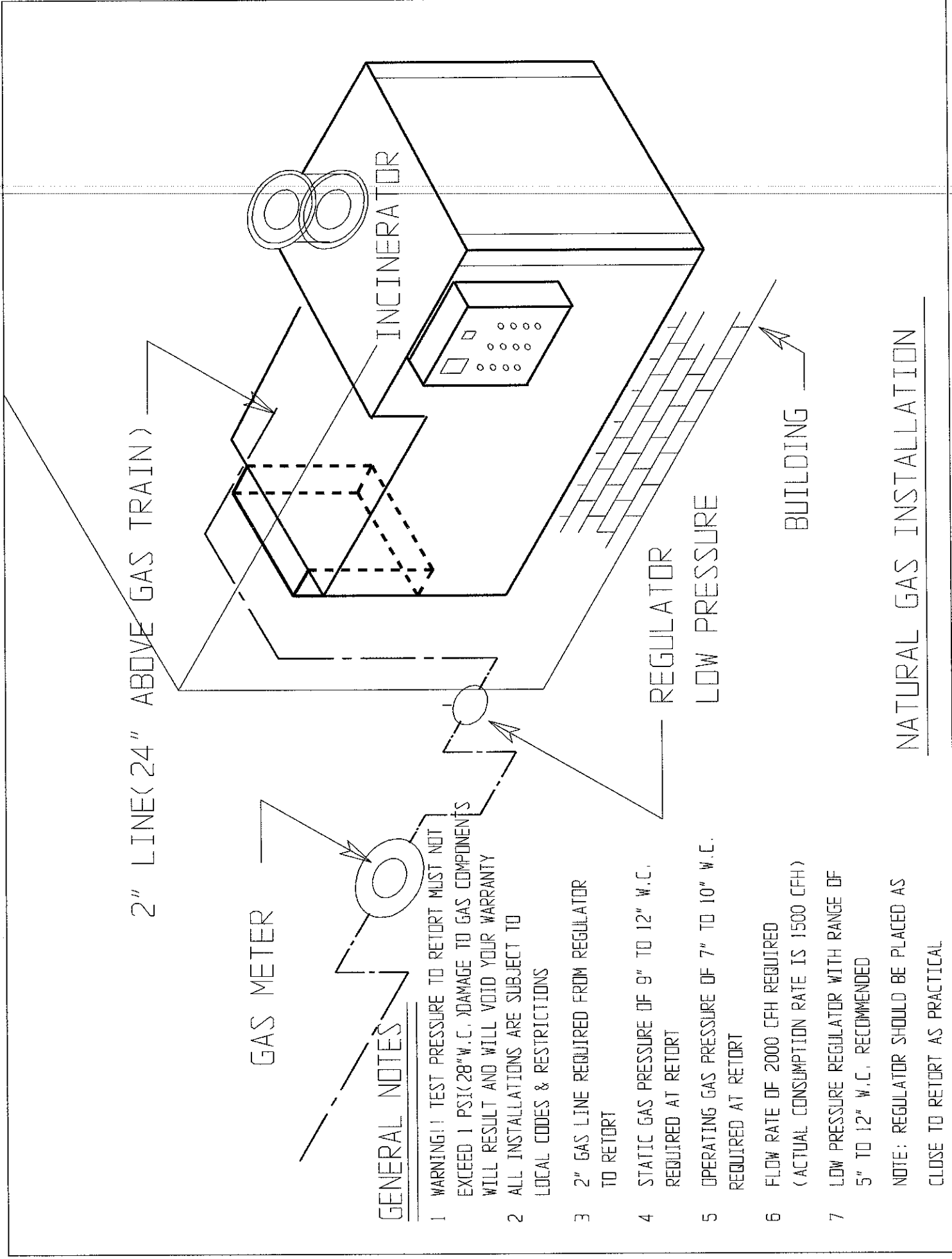


GENERAL NOTES

- 1 WARNING!! TEST PRESSURE TO RETORT MUST NOT EXCEED 1 PSI(28"W.C) DAMAGE TO GAS COMPONENTS WILL RESULT AND WILL VOID YOUR WARRANTY
- 2 ALL INSTALLATIONS ARE SUBJECT TO LOCAL CODES & RESTRICTIONS
- 3 REQUIRED PROPANE CAPACITY IS 22 G.P.H
- 4 LIQUID PROPANE GAS STORAGE TANK TO HAVE 1000 GALLON CAPACITY. TANK SIZE IS 42" DIA. x 15'-0" LG.
- 5 TANK MAY BE INSTALLED ABOVE GROUND OR BELOW GROUND SUBJECT TO CODE REQUIREMENTS.
- 6 PIPING SHOWN ARE MINIMUM REQUIREMENTS.
- 7 VAPORIZER IS REQUIRED WHEN AMBIENT TEMPERATURE REMAINS BELOW 40 DEG F FOR MORE THAN 24 HOURS.
- 8 "A" AND "B" DIMENSIONS ARE SUBJECT TO LOCAL CODES.

PROPANE GAS INSTALLATION

TO LOCAL CODES.



2" LINE (24" ABOVE GAS TRAIN)

GAS METER

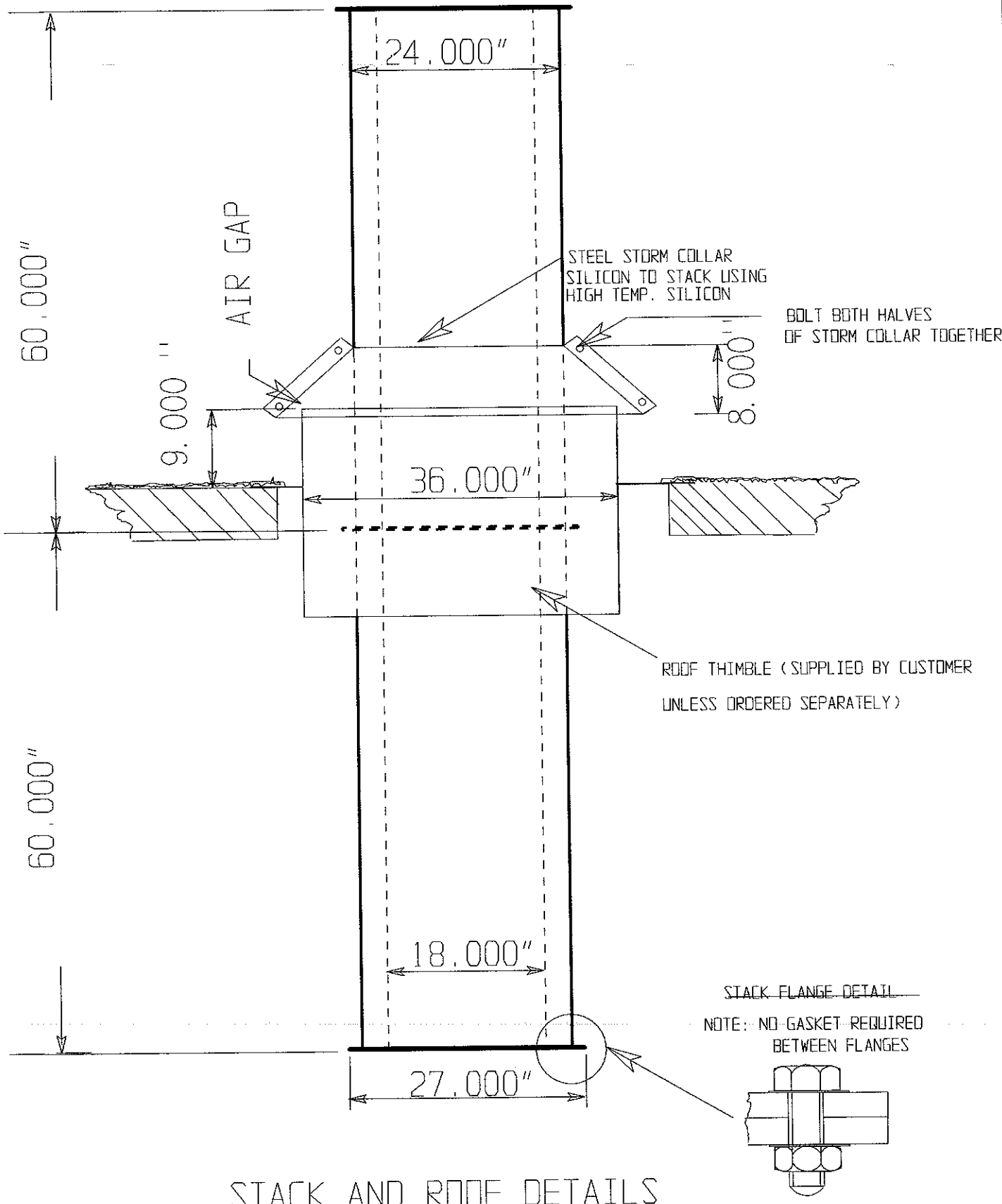
GENERAL NOTES

- 1 WARNING!! TEST PRESSURE TO RETORT MUST NOT EXCEED 1 PSI (28" W.C.). DAMAGE TO GAS COMPONENTS WILL RESULT AND WILL VOID YOUR WARRANTY
 - 2 ALL INSTALLATIONS ARE SUBJECT TO LOCAL CODES & RESTRICTIONS
 - 3 2" GAS LINE REQUIRED FROM REGULATOR TO RETORT
 - 4 STATIC GAS PRESSURE OF 9" TO 12" W.C. REQUIRED AT RETORT
 - 5 OPERATING GAS PRESSURE OF 7" TO 10" W.C. REQUIRED AT RETORT
 - 6 FLOW RATE OF 2000 CFH REQUIRED (ACTUAL CONSUMPTION RATE IS 1500 CFH)
 - 7 LOW PRESSURE REGULATOR WITH RANGE OF 5" TO 12" W.C. RECOMMENDED
- NOTE: REGULATOR SHOULD BE PLACED AS CLOSE TO RETORT AS PRACTICAL

REGULATOR
LOW PRESSURE

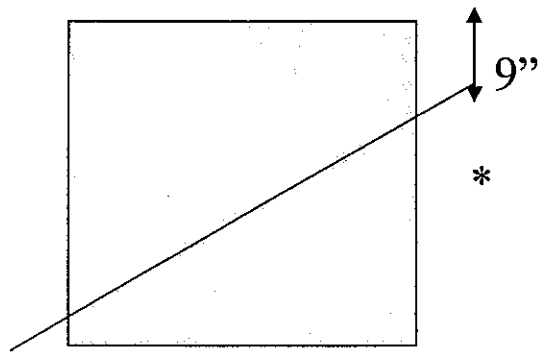
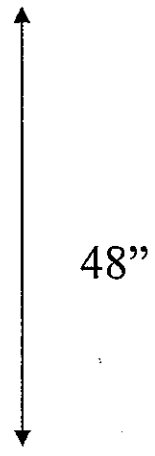
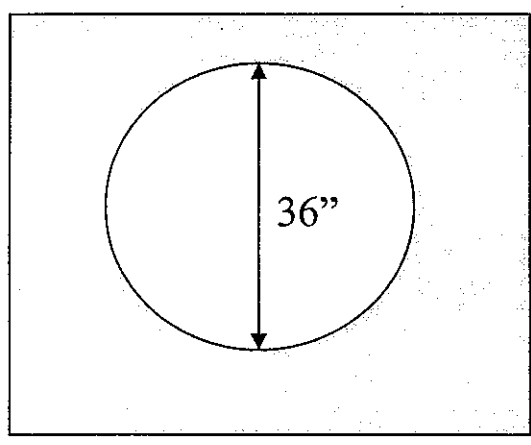
BUILDING

NATURAL GAS INSTALLATION

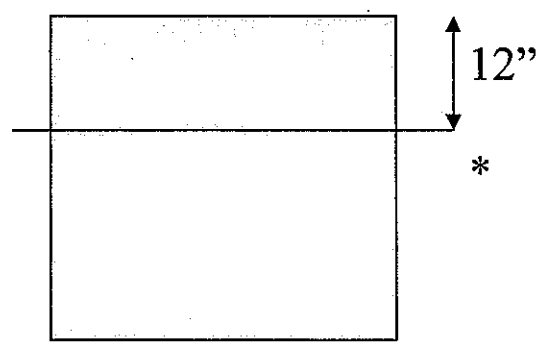


STACK AND ROOF DETAILS

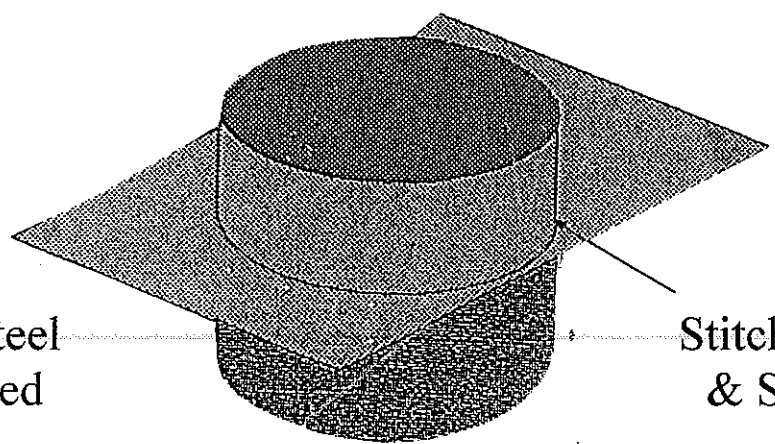
ROOF THIMBLE DETAIL FOR STANDARD 24" STACK



Pitched



Flat



16 Ga. Steel
Galvanized

Stitch Welded
& Siliconed

24" * = To Be Determined By Roof Thickness